



Almen Laboratories



FDA CLEARED

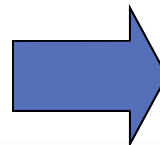
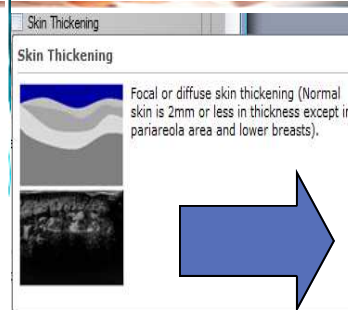
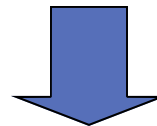
# BI-RADS COMPANION® CAD - COMPUTER-AIDED LESION ASSESSMENT & AUTOMATIC REPORT GENERATION

- Clinical history & Comparisons, Image View selection
- Scope of examination (survey) and technique used
- Analysis of lesions: background texture, feature description, location
- Analysis of lesions: size, shape, orientation
- Analysis of lesions: characterization utilizing BI-RADS Classification and Lexicon
- Correlation with physical, mammographic or MRI findings
- Overall assessment & Management recommendations
- Teaching File organization: View, Sort, Export
- Automated BI-RADS compliant Report generation
- Automated Tutoring software

## BI-RADS Lexicon:

- Shape, Geometry
- Orientation
- Margin
- Lesion Boundaries , Segmentation
- Echo Pattern
- Posterior Acoustic Features
- Report Organization
- Automated BI-RADS Tutor
- Upgradable to full CADx with scoring via a License Key

## CARTOONS & THUMB- NAILS ILLUSTRATIONS FOR EVERY BI-RADS DESCRIPTOR



## BI-RADS Classification Form

**BI-RADS Assessment**

Complex Echogenicity  
 Hypoechoic  
 Isoechoic

6. Posterior Acoustic Features

No Posterior Findings  
 Enhancement  
 Shadowing  
 Combined Pattern

7. Surrounding Tissue

Duct Changes  
 Cooper's Ligament Changes  
 Edema  
 Architectural Distortion  
 Skin Thickening  
 Skin Retraction  
 Scar

B. Calcifications

Macrocalcifications  
 Microcalcifications Out of Mass  
 Microcalcifications in Mass

C. Special Cases

Clustered Microcysts  
 Complicated Cysts  
 Mass in or on Skin  
 Foreign Body  
 Intramammary Lymph Nodes  
 Axillary Lymph Nodes

Normal  
 Abnormal

D. Vascularity

No Vascularity  
 Vascularity in Lesion  
 Vascularity Adjacent to Lesion  
 Diffusely Increased Vascularity in Surrounding Tissue

E. Select Assessment Category

Category 2 - Benign Finding

Tabulate Benign/Malignant    Reset

Finalize BI-RADS

**PERSONAL  
TEACHING  
FILE**

### ADDITIONAL CLINICAL USE:

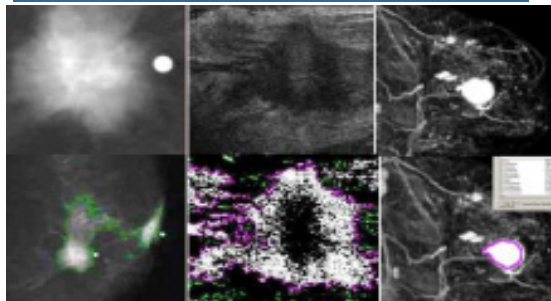
- DIAGNOSTICS
- RESEARCH
- RESPONSE TO THERAPY
- BIOPSY GUIDANCE
- TREATMENT PLANNING
- EDUCATION
- PACS / HIS / RIS
- AUTOMATION
- COST REDUCTION

Contact:  
760-806-0040 [voice]

E-mail:  
info@breastcompanion.com

Web:  
www.breastcompanion.com

## MULTI-MODALITY CUSTOMIZABLE



## EASY UPGRADES TO FULL CADx





Almen Laboratories



FDA REVIEWED 2011

ADDITIONAL INVESTIGATIVE USE:

- DIAGNOSTICS
- RESEARCH
- RESPONSE TO THERAPY
- BIOPSY GUIDANCE
- TREATMENT PLANNING
- EDUCATION
- PACS / HIS / RIS
- AUTOMATION
- COST REDUCTION

Contact: 760-806-0040 [voice]

E-mail: info@breastcompanion.com

Web: www.breastcompanion.com

## BREAST COMPANION® CADx - COMPUTER-AIDED LESION SCORING & AUTOMATED BI-RADS ASSESSMENT

- Clinical history & Comparisons, Image View selection
- Scope of examination (survey) and technique used
- Analysis of lesions: background texture, feature description, location
- Analysis of lesions: size (2 dimensions), shape, orientation, margins (lesion border segmentation)
- Analysis of lesions: characterization utilizing BI-RADS Classification and Lexicon
- Correlation with physical, mammographic or MRI findings
- Overall assessment & Management recommendations
- Teaching File organization and management
- Automated BI-RADS compliant Report generation
- Computer-aided Lesion Assessment (CLA) - CADx score



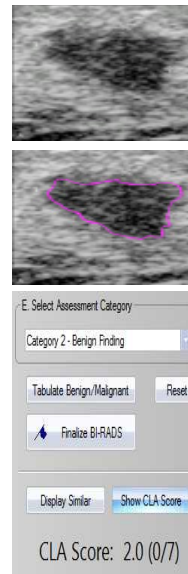
### BREAST CADx INDICATIONS

This diagnostic CADx application targets breast ultrasound, which provides radiologists with a high degree of confidence to differentiate benign lesions. It potentially increases accuracy of reading performance and radiologists' confidence in BI-RADS Assessment, reduces variability of interpretations, and increases ultrasound's role in breast cancer detection and management. The clinically validated and FDA reviewed CADx software can be used standalone or as embedded solution. It also enables electronic Personal Teaching File with lesion imaging library, annotations and findings created by the user.

In the future it can be incorporated into an ultrasound instrument or workstation such that image scoring and CADx assessment is available

### BREAST CADx AVAILABILITY

Our breast ultrasound CADx exists in desktop standalone form or OEM Libraries and is used by individual customers, group practices, hospitals as well as in service bureau environment. "Private Label" customized version is available for customers with desire to have our CADx system to have "look-n-feel" of their other product.



- Original study images reviewed and assessed
- Lesion border defined automatically or outlined (segmented) by the specialist
- Lesion scored based on pathology of similar lesions with confirmed findings in Reference Library
- Defined lesion stored in Personal Teaching File

### FUTURE: UNIVERSAL BREAST CAD

